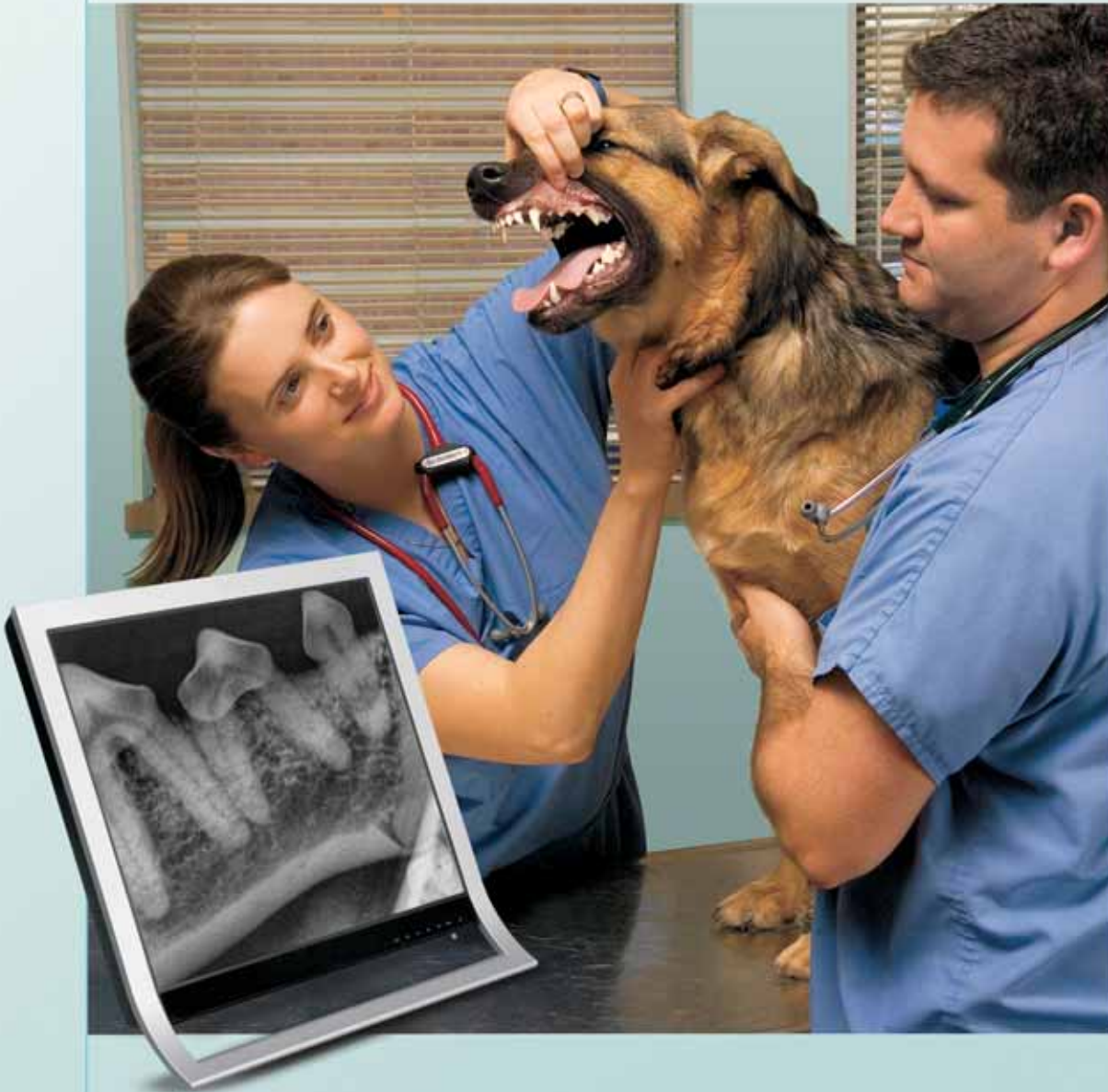


Veterinary Dental Digital Imaging Suite

Grow Your Dental Practice to the Next Level of Care and Efficiency.



Thousands of Healthcare Installations Worldwide.

 **ALLPRO** IMAGING
THE IMAGING EXPERTS

Presenting Easy, Versatile,

Quickly Achieve a Noticeably Higher Level of Oral Care.

- Easily acquire more diagnostic information; better visualize pathology.
- Expose only the dental area instead of the entire head, in one well exposed take.
- Capture a full arch with one X-ray, shortening the length of time the animal is anesthetized and exposed to X-ray.
- Use veterinary-specific software to highlight areas of concern for yourself as well as for client viewing and demonstration. Gain compliance more easily as clients more readily understand the procedures you recommend.
- Increase word of mouth among clients impressed with the clarity and professionalism of your presentation.
- Save all X-ray files in your digital patient folders. Examining radiographs of periodontal or endodontic cases taken at three to six-month intervals provides invaluable information concerning progression or resolution of disease.
- Instantly send images in various formats, e.g. Dicom 3, jpg or tif, to colleagues.
- Case documentation to support treatment decisions proves invaluable for insurance claims and legal proceedings.

You'll wonder how you managed without an ALLPRO Imaging system. You'll be elated at the loss of messy, noxious film processors, darkrooms, excessive supplies, fedex, labor costs and more. You'll appreciate the freedom that results from a truly effective workflow solution and you'll be proud to show it to clients.



e, Efficient Dental Imaging.

“The speed and ease of digital is a godsend. The last thing I want to do is to expose an eighteen year old animal to longer or repeated film X-rays.”

–Dr. Benjamin Colmery III, DVM, Dixboro Veterinary Dental and Medical Center, Ann Arbor, MI.



“Overlapping dentition leads to failure in diagnosis, incomplete information or poor visualization of pathology. Oral x-ray equipment is the BEST way to visualize all structures in the oral cavity.

–Dr. Don DeForge, VMD, FAVD, FWAR, Affil. AGD, Dtr. of CT and NY Specialty Centers for Oral Care, Adjunct Northwestern CT College Periodontology and Oral Radiology

“ScanX digital imaging has improved my presentation ...it’s exciting for clients to look at.” –Dr.

James C. Meyer, East Hampton NY

HELPFUL INFORMATION ON ADVANCED DENTISTRY.

You’re comfortable with cleanings, perio exams and extractions. However, here are some of the conditions that will comply with the guidelines from the American Veterinary Dental College.

More information will be found at www.avdc.org/case-log-requirements.pdf

When to Take a Radiograph:

- When a tooth is mobile
- When gingiva bleeds with or without probing
- When a tooth is fractured (either enamel, dentin, or pulpal exposure)
- When a tooth is discolored (pulpitis)
- When furcation exposure is present (periodontal disease)
- When teeth are missing without explanation
- When a feline ondoclastic resorptive lesion (FORL) is noted. Prior to extraction for anatomical orientation and documentation

OUR COMMITMENT TO YOU IS THE BEST REASON FOR YOU TO CONFIDENTLY COMMIT TO DENTISTRY.

Expanding the dental capabilities of your small animal practice offers huge opportunity. Shouldn’t you have the backing of an industry leader?

ALLPRO Imaging is a division of Air Techniques, Inc., a leading manufacturer of medical and dental equipment, founded in 1962. Thousands of ALLPRO Imaging systems have been sold globally, installed and serviced through our long standing network of expert dealers, authorized after completion of rigorous training.

PLUS ALLPRO IMAGING DESIGNS AND MANUFACTURES EQUIPMENT IN THE U.S.

 **ALLPRO IMAGING**
THE IMAGING EXPERTS

ScanX[®] Phosphor Plate-Based CR Integrates Easily into your Work

What It Does and How Fast It Works.

ScanX is an advanced computed radiography (CR) system that loads and operates in normal room light. It rapidly produces digital, diagnostic quality images that, thanks to ScanX's In-Line Erase feature, can be scanned, viewed and erased in just 17 seconds.

Complete Size Range 0-4.

ScanX fulfills all your clinical intraoral needs, including #4 occlusal.

How It Works.

ScanX utilizes phosphor storage plates (PSP) which are coated with an x-ray sensitive material. PSPs are durable and reusable thousands of times. Upon exposure to X-rays, the plate stores a latent image which is scanned by ScanX and sent to your computer.

It Works The Way You Work, With Added Benefit To The Animal.

PSPs replace film. Simply position them exactly as you position film, and expose them with your existing X-ray equipment. There's a significant exposure reduction (of approximately 50%) over standard intraoral film.



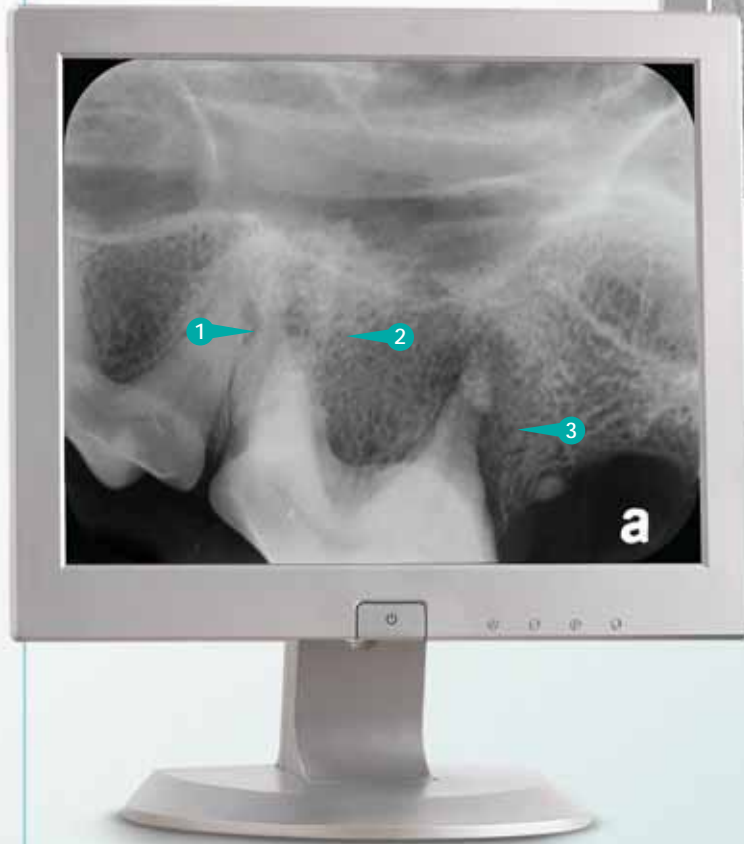
ScanX[®] DVM System
accepts sizes 0-4.



R Digital Imaging System Workflow.

More Accurate Diagnoses, More Easily Determined.

- View both skeletal and soft tissue with one exposure.
- Images can be magnified, inverted and sharpened.
- Change contrast and brightness.
- Measurements may be calculated using line segment and angle measurement tools.



Left: Upper fourth premolar. 1, 2, 3—fractured tooth roots with severe apical pathology.

Image provided by Dr. Ben H. Colmery III, DVM, Diplomate AVDC.



Right: Mandibular premolars horizontal bone loss and furcation bone loss.

Image provided by Dr. Don DeForge, VMD, FAVD, FWAR, Affil. AGD.

Automatically compare your film costs to digital at
<http://www.allproimaging.com/Veterinary/ScanX/default.aspx>

Work More Efficiently with ACCENT™

Sensor-Based DR Digital Imaging System.

What It Is and Does:

ACCENT is an innovation in high performance CCD Direct Radiography (DR) Digital Sensor systems, featuring the unique advantages of Bluetooth technology. Experience:

- Less labor.
- Fewer steps.
- Fast “image capture to image viewing” time.
- The most detail-rich, lowest noise radiographic images possible.
- Wireless transmission from the control module to your computer.

ACCENT is available in sizes 1 and 2.

How It Works:

Expose the ACCENT sensor with your existing X-ray equipment. Your image is immediately digitized and transmitted to your computer. The Bluetooth option enables wireless, stable transmission of the image from control box to computer, up to 30 feet away. Also available with a USB 2.0 high speed connection.

Radiation exposure can be reduced by over 50% compared to D-Speed film.

More Accurate Diagnoses, More Easily Determined.

- View both skeletal and soft tissue with one exposure.
- Images can be magnified, inverted and sharpened.
- Change contrast and brightness.
- Measurements may be calculated using line segment and angle measurement tools.

ACCENT™ is Efficient and Convenient.

- Technicians are able to send X-rays from the exam or wet room to the consulting area.
- Eliminate the time, expense and complexities involved in hard wiring your office.



ACCENT™ is the World's First Bluetooth Sensor.

Expect Unsurpassed Stability with Provecta™ V Specialized X-Ray Unit.

Complete your dental imaging suite with the X-ray unit specifically designed to meet dental veterinarians' needs.

Fine ALLPRO Imaging Engineering Delivers a Host of Benefits to You:

- Precise positioning and stability. Fine engineering coupled with aircraft grade aluminum alloy construction fosters exceptional rigidity, stability and ALLPRO's exclusive "no-drift tubehead".
- Veterinary specific icons.
- Available as Wall-Mount and Mobile Units.
- Versatile operation includes pre-programmed as well as manually adjustable exposure values, custom settings that can be stored in memory and the ability to set exposure time to read in seconds or pulses.
- Instant switching between digital and film exposure times. Automatic settings eliminate guesswork.

How to Get Up and Running

The ALLPRO Imaging Veterinary Dental Digital Imaging Suite is sold, installed and serviced through ALLPRO Imaging's long standing nationwide network of authorized dealers. Ask your qualified dealer to specify the system that's right for you.

To locate your authorized ALLPRO Imaging dealer, call: **800.247.8324**.

- 1:32 duty cycle allows shorter times between exposures without a concern for tubehead overheating.
- Quick and easy installation reduces room downtime.



"I have used four different X-rays units in my multiple oral care centers and the Provecta™ V is the only X-ray unit without tube head shift or drift. It is exceptional."

—Dr. Don DeForge, VMD, FAVD, FWAR, Affil. AGD
Dtr. of CT and NY Specialty Centers for Oral Care

 **ALLPRO IMAGING**
THE IMAGING EXPERTS

www.allproimaging.com

SPECIFICATIONS

SCANX® DVM for the veterinary dentist. It accepts all intraoral sizes from 0 to 4 occlusal.

Dimensions (WxDxH):	15" x 15" x 15.5"
Weight:	43 lbs.
Electrical:	100-240 VAC
Imaging Media:	Phosphor Storage Plates Sizes 0, 1, 2, 3, 4
Laser Classification:	Class 1 Laser Product, Compliance with FDA HHS21 CFR 1040.10 and IEC 60825-1
System includes:	Power Supply and USB Cable
Software:	Sold separately

SCANX 12 DVM (not shown in brochure) accepts plate sizes 10"x12", 8"x10" and all intraoral sizes.

ACCENT™ CCD DIGITAL IMAGING SYSTEM for the veterinary dentist. ACCENT is available in sensor sizes 1 and 2.

Sensor Specifications Sensor Size 1		Sensor Size 2	Bluetooth Control Module Specifications	
Number of Pixels:	1.25 million	2.05 million	Resolution:	16 lp/mm
Pixel Size:	22 x 22 µm	22 x 22 µm	PC Connector:	Wireless Bluetooth
Technology:	CCD + Scintillator	CCD + Scintillator	Digital Signal Processing:	32 bits
Dimensions (LxWxH):	39.5mm x 25mm x 5.7mm	42.5mm x 32.5mm x 5.7mm	Image Acquisition:	4096 gray scales
Software:	Sold separately		Dimensions (LxWxH):	4.75" x 3.25" x 1.25"

ACCENT is also offered with a USB high-speed connection.

PROVECTA™ V VETERINARY DENTAL X-RAY

Electrical:	108-132V, 60 Hz
X-Ray Tube:	70 kVp, 8mA; 360° Tubehead rotation
Main Circuit Breaker:	10 Amp/120V
Focal Distance:	8" (20 cm)
Focal Spot:	0.8mm (IEC 336)
Total Filtration:	2 mm Aluminum Equivalent
Duty Cycle:	1:32
Exposure Range:	0.02 sec. / 1.0 pulses to 3.2 sec. / 192.0 pulses

Scissor Arm & Tubehead

Extension:	40" Inside reach from center post
Movement:	45 degree angle left or right from center post
Weight:	155 lbs.

PROVECTA™ V is available as Wallmount and Mobile unit.

MINIMUM COMPUTER REQUIREMENTS

CPU Speed:	1.66 GHz
Operating System:	Windows 2000 Service Pack 4 or later, or Windows XP Professional Service Pack 1a or later
RAM:	1 GB
Hard Drive:	60 GB (2 GB free for image acquisition, the rest for program files and image storage)
CD ROM Drive:	CD-RW 52x24x52
Monitor (1024x786 resolution or higher):	SVGA 17", contrast ratio 450:1, .22 dot pitch capability
Video Display Adapter:	128 MB RAM
Keyboard, Mouse:	Standard
USB Port:	USB 1.1

PREFERRED COMPUTER REQUIREMENTS

CPU Speed:	2.8 GHz Pentium IV or higher
Operating System:	Windows 2000 Professional Service Pack 4 or later, or Windows XP Professional Service Pack 2
RAM:	4 GB
Hard Drive:	120 GB (2 GB free for image acquisition, the rest for program files and image storage)
CD ROM Drive:	CD-RW 52x24x52
Monitor (1024x786 resolution or higher):	17" or larger, contrast ratio 1000:1 or higher, .22 dot pitch capability
Video Display Adapter:	256 MB RAM
Keyboard, Mouse:	Standard
USB Port:	USB 2.0
Backup Device:	Recommended

A Walsh Imaging, Inc.

55 Cannonball Road, Pompton Lakes NJ 07442

(P) 973.616.7100 (F) 973.616.7191 (W) www.awalshimaging.com



Contact your authorized ALLPRO Imaging dealer or call: 800.247.8324.

1295 Walt Whitman Road, Melville, New York 11747 • 516.433.7676 • Fax 516.433.7683

www.allproimaging.com

PN 9922-195 Rev B ©ALLPRO Imaging